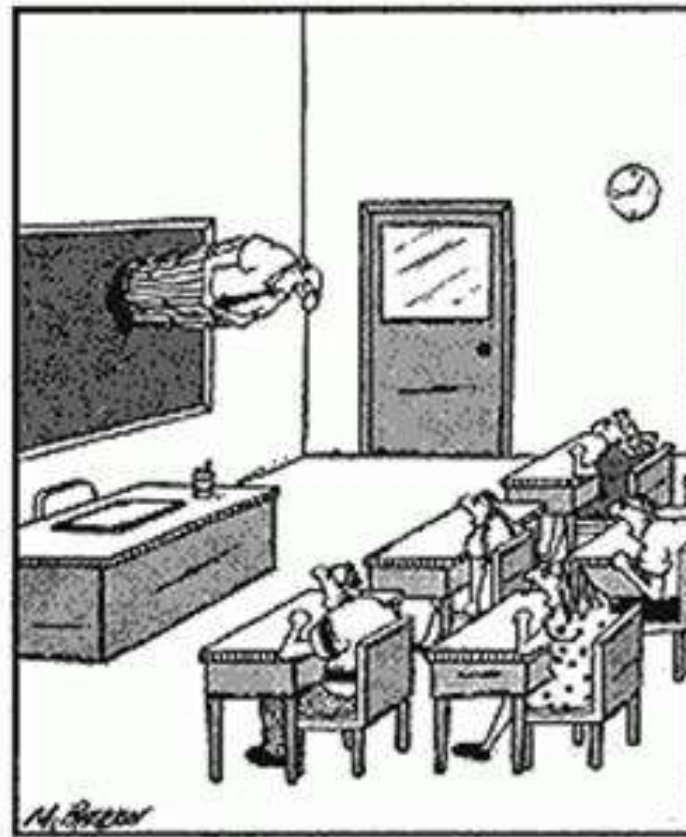


Distance vs. Displacement



H. Breen
"Good morning, and welcome to
The Wonders of Physics."

DISTANCE ~

- total length travelled

- scalar

- symbol d

- measured in m

DISPLACEMENT ~ change in position, with
a specific direction

- vector

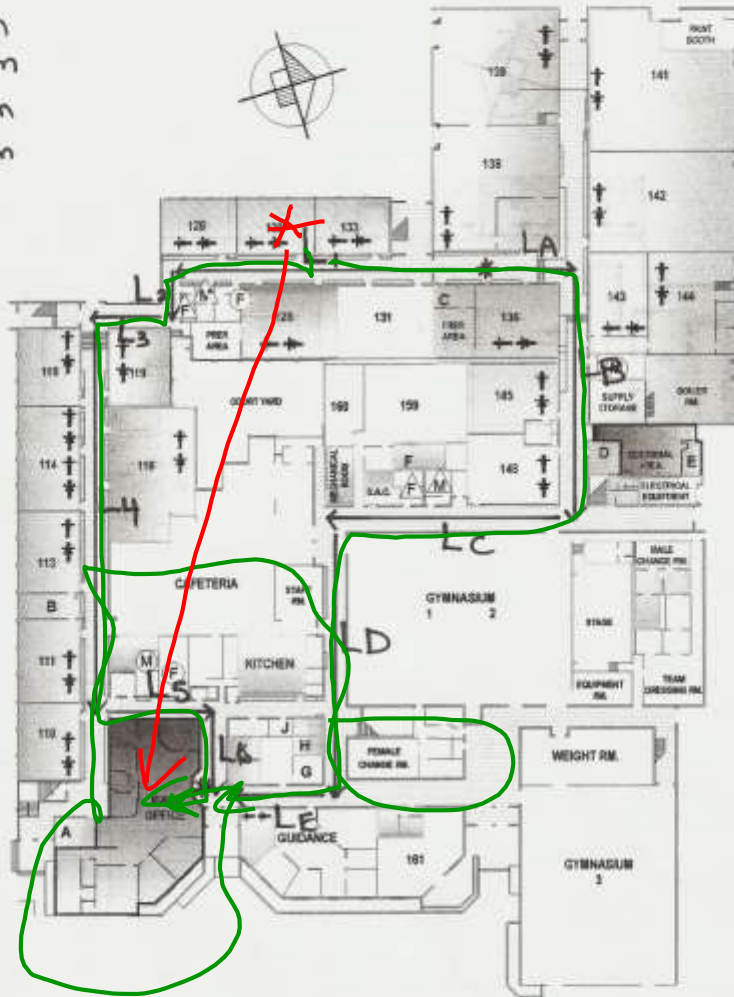
- measured in m [direction]

- symbol \vec{d} \rightarrow \rightarrow

$L_1 = 45\text{ m}$
 $L_2 = 8\text{ m}$
 $L_3 = 12\text{ m}$
 $L_4 = 56\text{ m}$
 $L_5 = 16\text{ m}$
 $L_6 = 12\text{ m}$

$L_A = 14\text{ m}$
 $L_B = 36\text{ m}$
 $L_C = 38\text{ m}$
 $L_D = 40\text{ m}$
 $L_E = 16\text{ m}$

NORTH STREET



LEGEND:

Offices

- A History
- B Geography
- C Science
- D Tech / Site
- E Custodian

- F Resource
- G Co-op
- H French
- J Special Education
- K Family Studies

Washrooms

- (F) Female
- (M) Male
- (F) Female Staff
- (M) Male Staff

SAFE AREAS

COMMAND POSTS

UNSAFE AREAS

STUDENT LOCATIONS

MAIN FLOOR
CODE RED LAYOUT



FENELON FALLS SECONDARY SCHOOL